

CONCEPT

VOL. 134

International Magazine of Competition CA 현대건축사 JUNE 2010

Architects Concept

DAAIN Architecture & Engineering

Hangzhou Sports Park **NBBJ + CCDI**

Vattanac Capital **TFP Farrells**

OPUS Office Tower **Zaha Hadid**

Boeun Boarding School **SEON ARCHITECTS & ENGINEERINGS**



Lofts Yungay II Valparaso, Chile

Rearquitectura

용가이 공동주택 II

용가이 공동주택은 칠레 발파라이소 세계 유산 구역 주변에 위치한다. 발파라이소의 풍경은 매우 독특하다. 절벽으로 거의 떨어지는 듯한 다양한 색상의 주택군이 언덕을 이루고 있기 때문이다. 각각의 주택은 서로 다르면서도 함께 조화로운 풍경을 만들어낸다.

공동주택 부지는 남북과 동서축으로 경사가 심한 언덕 비탈지로 두 방향의 주요 파사드를 가진다. 동쪽 파사드는 언덕 꼭대기의 거리를 향해있는 반면, 서쪽 파사드는 가파른 절벽을 향해 있다. 공동주택이 들어설 곳은 가파른 언덕 비탈 전체에 다양한 색상의 소규모 주택이 조합을 이루며 흩어져 있다. 공동주택은 이러한 도시 풍경과 조화를 이루도록 계획했다. 이를 위해 공동주택을 좀 더 작은 연속된 볼륨으로 세분화했다. 각각의 볼륨은 개별적인 색상과 개별 세대를 갖는다. 공동주택은 언덕 경사를 따라 배치하여 지형에 순응시켰다. 정렬된 공동주택의 주요 입면부는 가로와 연속성을 이루며 정렬되어 있다.

공동주택의 지하층 레벨의 복도는 저장실과 2층으로 이루어진 6세대를 연결하며, 각 세대는 절벽이 보이는 작은 정원을 가지고 있다. 거리와 접하는 레벨은 주차장과 단층 3세대를 포함하고 있다. 1층에는 3층으로 이루어진 11세대의 공동 입구가 있으며 각 세대는 옥상 테라스와 바다를 향한 넓은 조망이 있다.

Lofts Yungay II is a collective housing building located in the outskirts of the

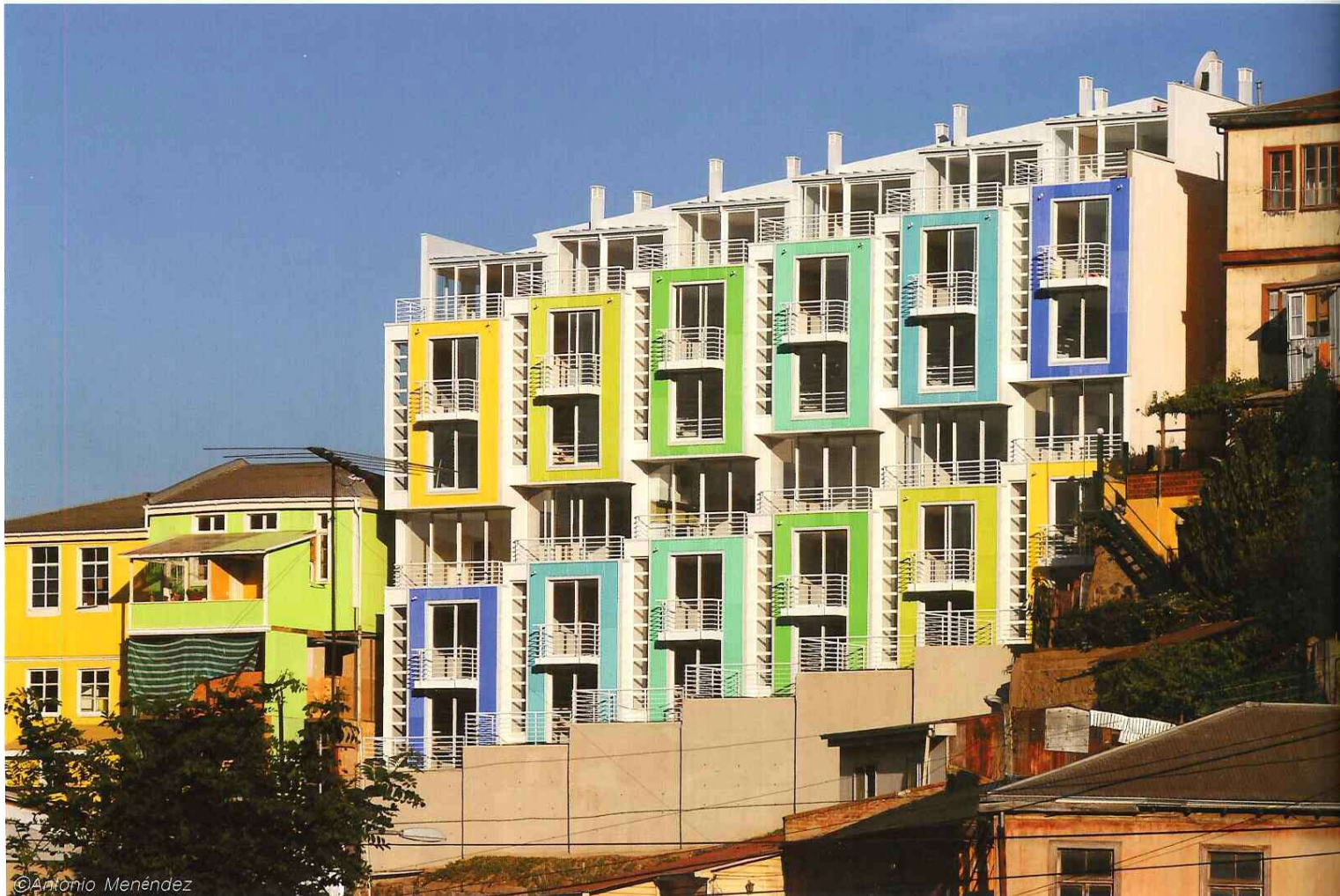
World Heritage Area of Valparaíso, Chile. Valparaíso's landscape is very characteristic due to its many hills packed with colorful houses almost falling out of the cliffs. Each house is different from one another, but together they create a harmonic landscape.

The project's lot is located in a hill side with a strong slope in both north-south and east-west directions. The site has two main facades; the east facade faces the street at the top of the hill, meanwhile the west facade faces a steep cliff.

The project was intended to blend into this urban landscape characterized by the combination of small colorful houses dispersed throughout the steep hillside.

For this reason the building was fragmented into a series of smaller volumes. Each of these volumes is an individual unit, and has an individual color. They are placed at different altitudes following the slope of the hill, and thus, adapting the building into its geography. On the main facade, the volumes are aligned respecting the continuous facade of the street. The building's contains corridor at level -1 leads to the storerooms and to 6 two-stories units, each one with a small garden overlooking the cliff. The street level contains the parking lots and 3 one story lofts. Finally, on level +1 are the entrances to 11 three-stories lofts, each one with a roof-top terrace and a wide view towards the ocean.

Written by Rearquitectura



Location General Mackenna 220, Cerro Yungay, Valparaíso, Chile
Use Housing(20 Housing Units)

Site Area 418m²

Bldg. Area 285m²

Gross Floor Area 1,366m²

Bldg. Coverage Ratio 68%

Gross Floor Ratio 3.27%

Bldg. Scale 2 Stories below Ground, 4 Stories above Ground

Structure Reinforced Concrete

Max. Height 11m in Street Facade, 16.5m in Rear Facade

Landscape Area 133m²

Parking Lot 8cars

Exterior Finish Mini-wave Galvanized Steel, Wooden Rauli Windows,
Vinyl Windows

Interior Finish Slate Stone Paving, Carpet, Vinyl Wallpaper, Ceramic Tiles

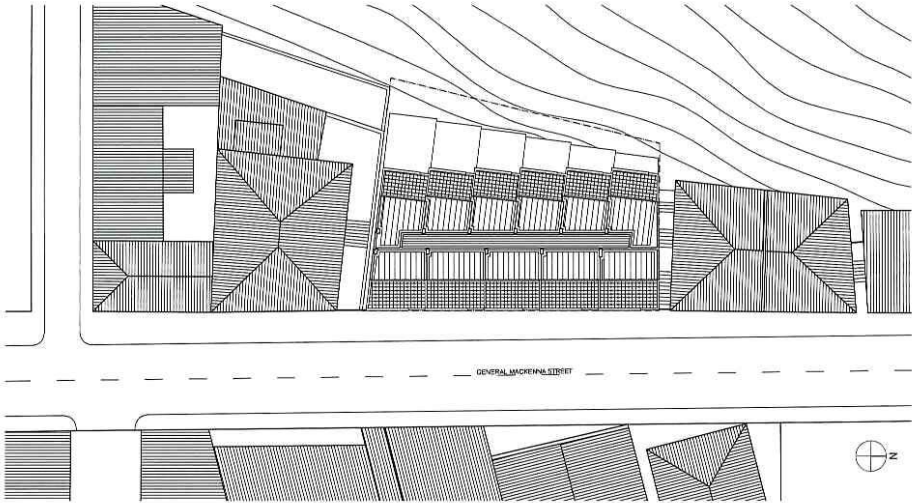
Architects Rearquitectura _ Antonio Menéndez, Cristian Barrientos

Construction Company JMC Constructora Ltda.

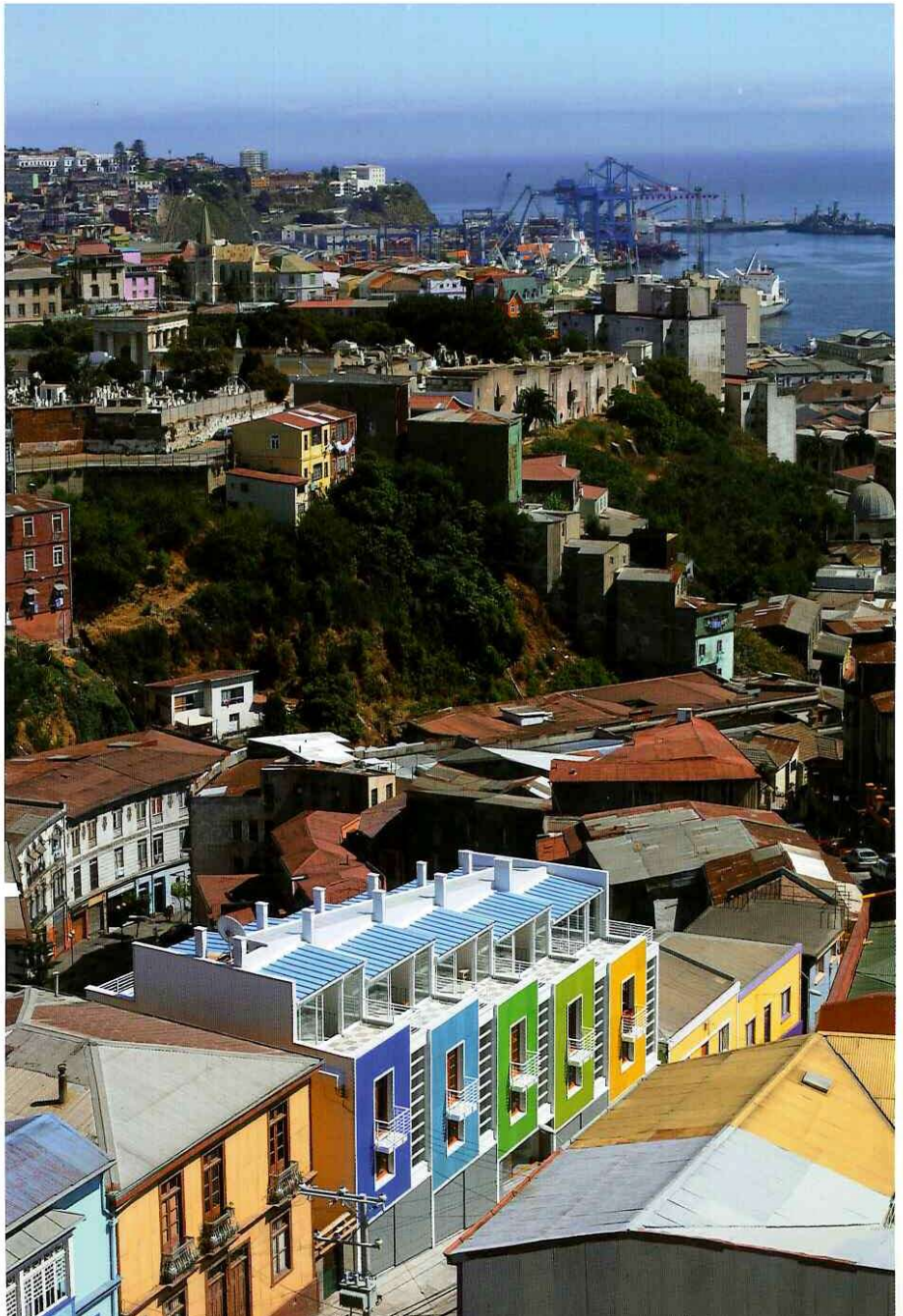
Structural Engineer Jorge Dahdal

Soil Mechanics H.A.O. Ingeniería

Client Inmobiliaria Rearquitectura Ltda.

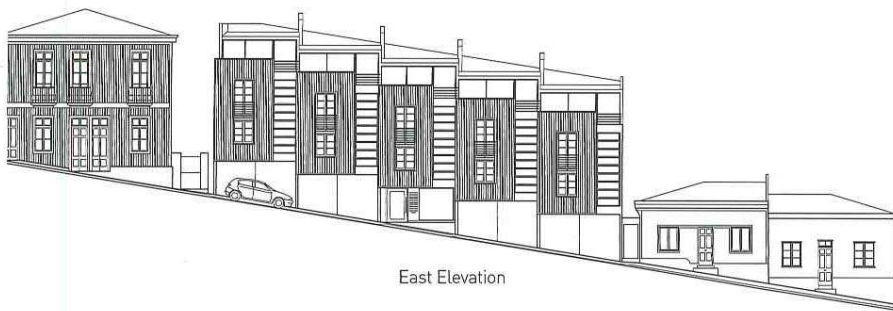


Site Plan





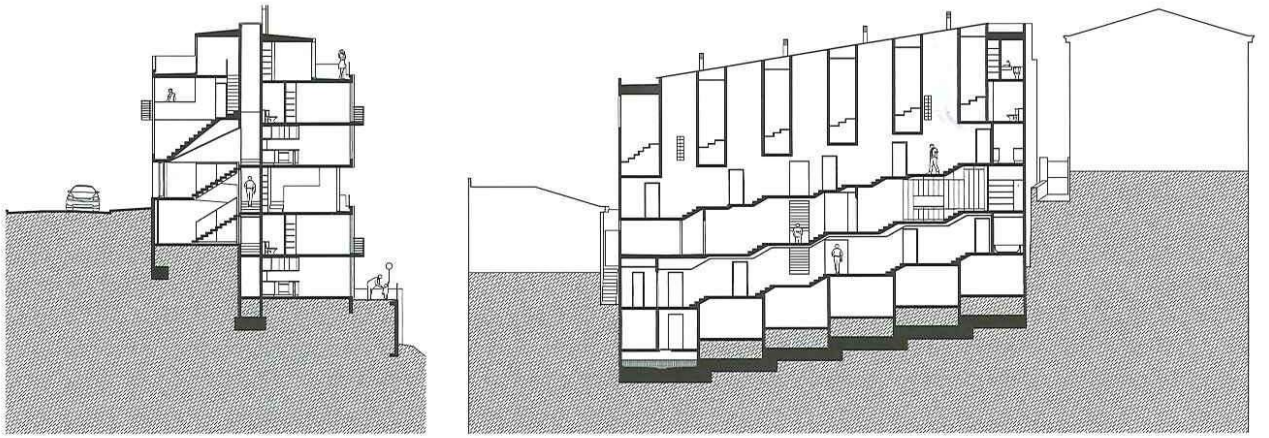
©Marcos Mendizabal



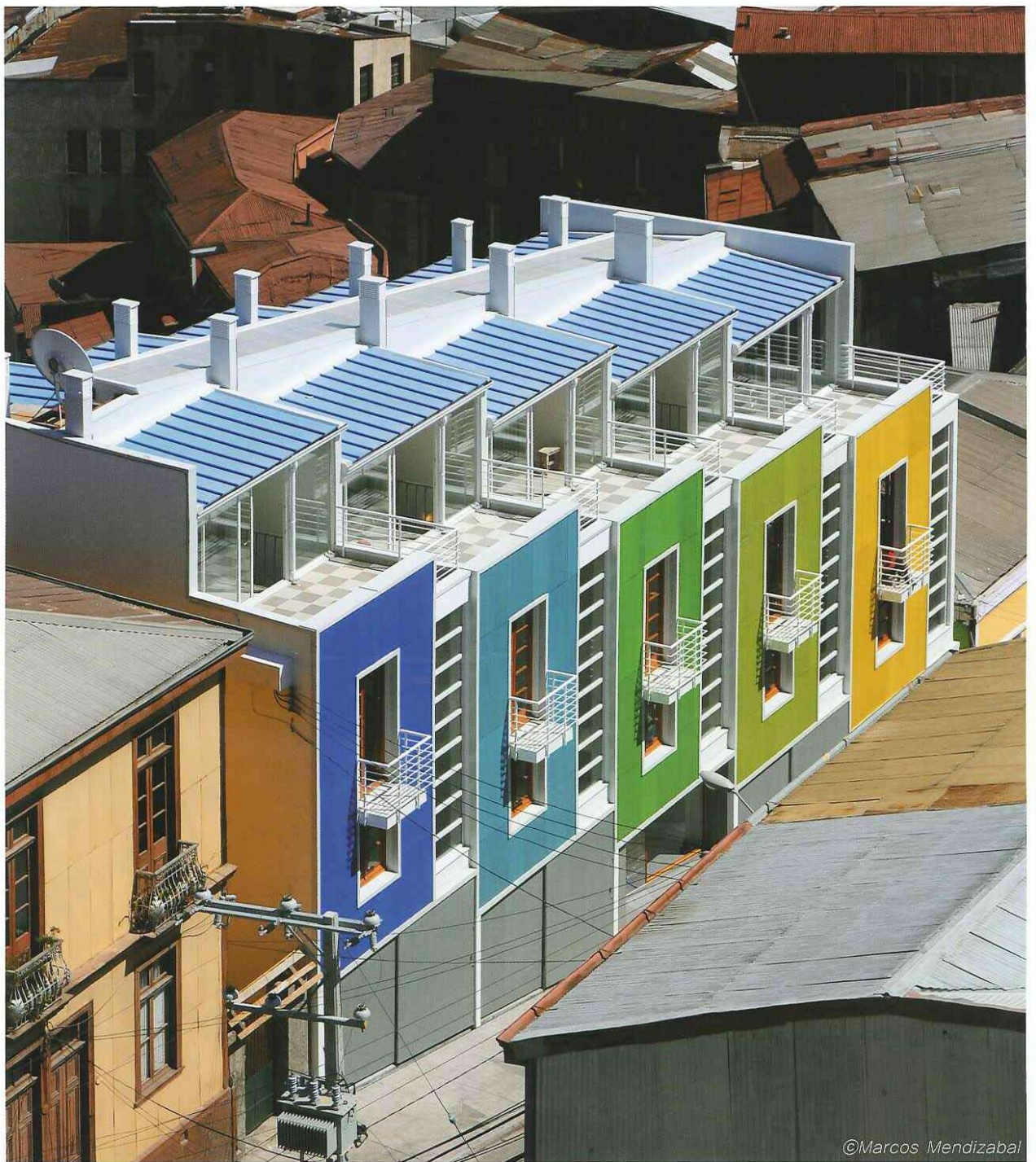
East Elevation



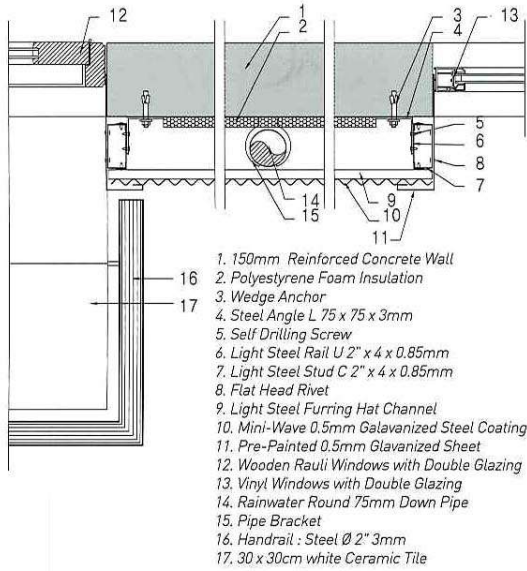
West Elevation



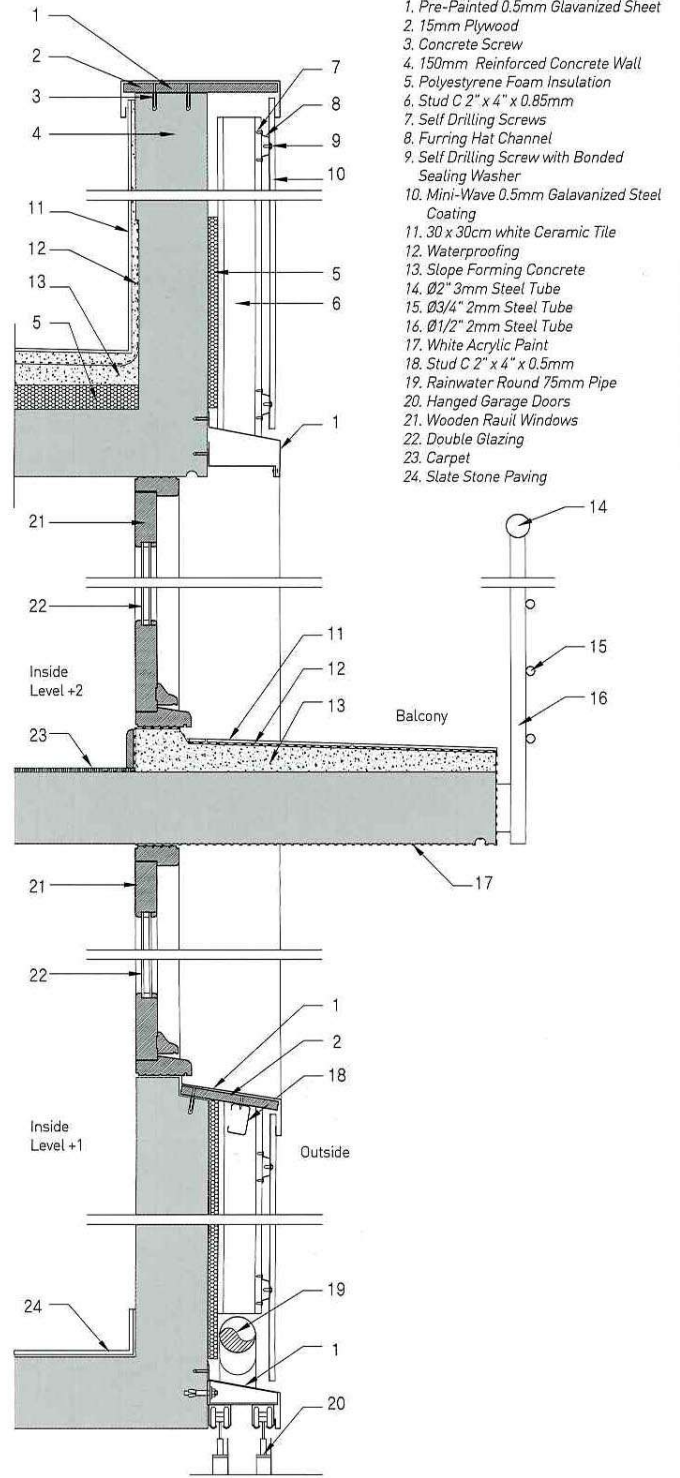
Section



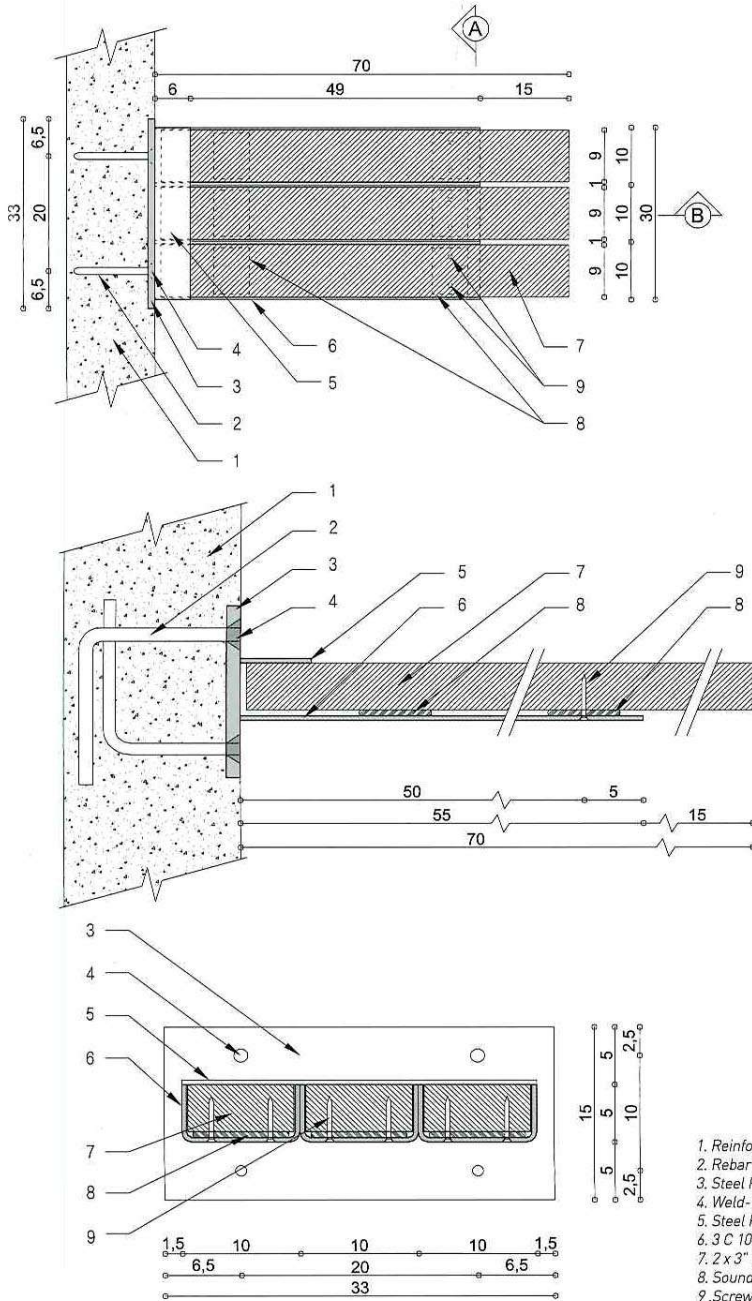
■ Facade Horizontal Section

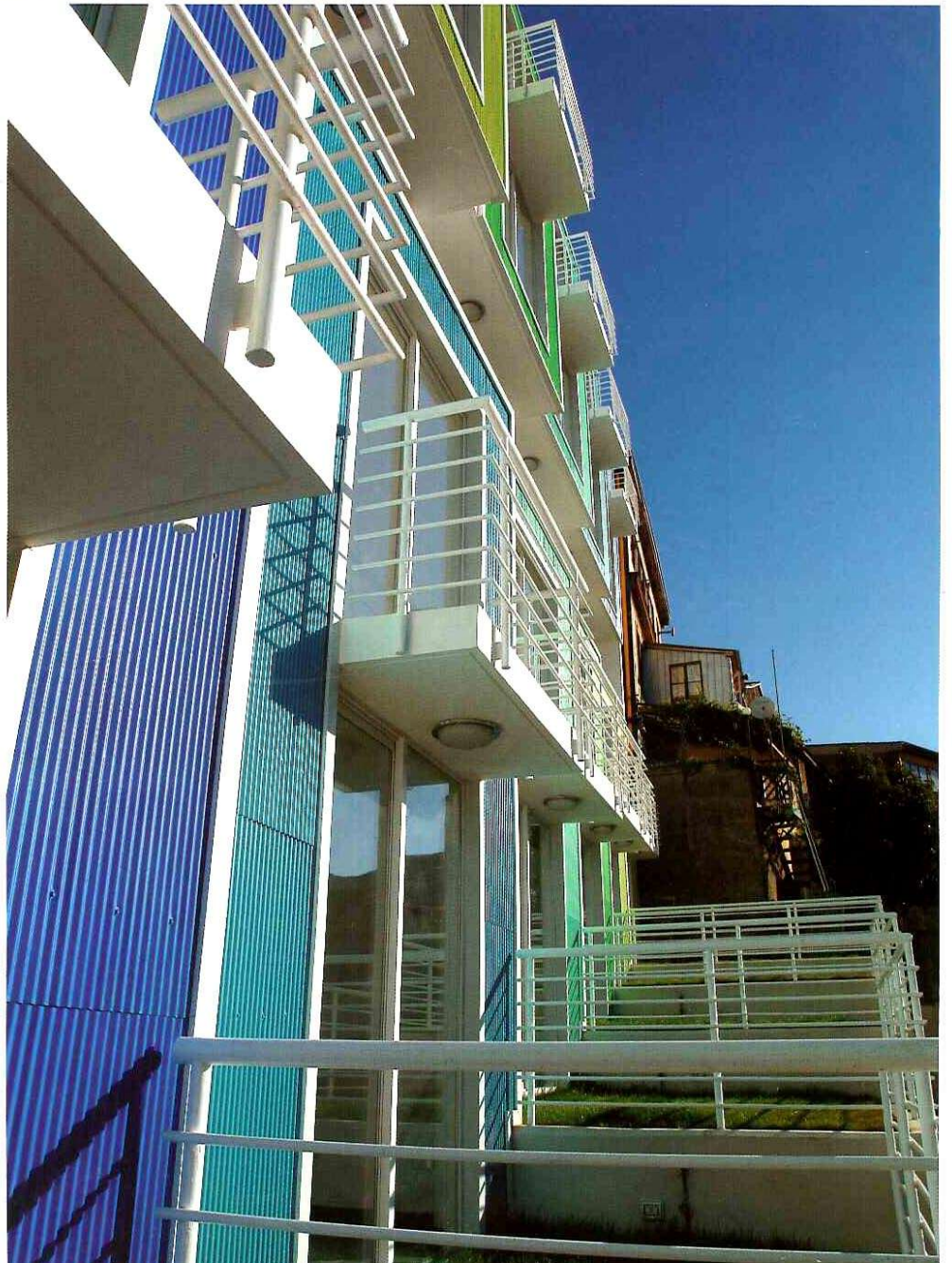


■ Facade Vertical Section



■ Cantilever Stair







©Antonio Menéndez



©Antonio Menéndez

